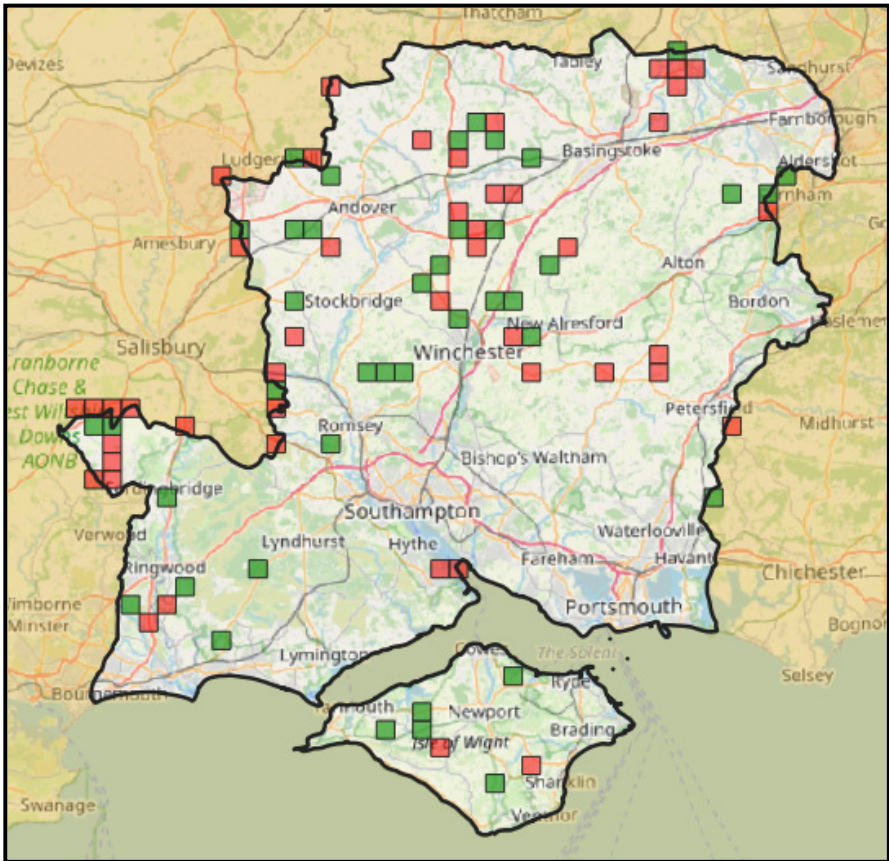


## 2021 TETRAD CHALLENGE

You will see from this year's Annual Butterfly Report that records were received from 84% of the 1,246 tetrads (2kmx2km squares) embraced by our Branch Boundary. This is the highest coverage we have ever achieved and a tribute to the efforts of all our butterfly recorders.



And so how about the remaining squares? An interrogation of our dataset has revealed that over the five years 2016-2020 our record coverage is a little over a staggering 92%.

So what of the unrecorded squares? Some of these are squares with only a small portion within our boundary; these have been omitted on the map which shows the more significant unrecorded squares in red. In addition,

those squares where less than five records have been received in the same period are shown in green.

Now it may be that some of these areas are on private land, but it would be good to investigate as many accessible areas as possible this year to see if some of these 'gaps' could be filled.

If you are interested in searching any of these squares, please let me know and I will provide a larger scale map to help you ensure you are in the right place.

Good luck and please submit your records in the usual manner e.g. Branch Spreadsheet, iRecord, Living Record etc.

Good Luck!

Bob Ansell

County Butterfly Recorder